

Hokudai Museum  
Your spot



goh kawai  
2012-11-14 wed1 week7  
english seminar, class 5  
e215



## opening slideshow

updated 2012-11-11 06:30 utc goh@kawai.com <http://goh.kawai.com/>



## today's menu

- | wear your nametag
- | greet your TAs
- | shake hands and say hello
- | add some phrases
- | see a slideshow
- | learn how to do your assignment

updated 2012-11-11 06:30 utc goh@kawai.com <http://goh.kawai.com/>



## volunteers wanted

- | tell us about yourself

updated 2012-11-11 06:30 utc goh@kawai.com <http://goh.kawai.com/>



## the sapporo clock tower

- | The name of the building is the Sapporo Clock Tower.
- | The building was built \_\_\_\_\_. (when)
- | It was built by \_\_\_\_\_. (who)
- | The building cost \_\_\_\_\_ to build. (cost)
- | It was originally called the Enbujou (演武場), and was used as a \_\_\_\_\_. (purpose)
- | The clock was added in \_\_\_\_\_. (when)
- | The building is open \_\_\_\_\_. (days and hours)
- | Admission is \_\_\_\_\_. (cost for adults and children)

updated 2012-11-11 06:30 utc goh@kawai.com http://goh.kawai.com/



## today's conversation

- June Mark, what's this building?
- Mark Huh? That's the Sapporo Clock Tower. It was ...
- June Mark, you're totally awesome! How come you know so much?
- Mark Aw, I just pretend I do.



updated 2012-11-11 06:30 utc goh@kawai.com http://goh.kawai.com/



## when you're the local

- | ask for info and fill in the blanks
- | give info
- | create your answers

<b>local</b>	partner ID <b>99121236</b>
they like your ...	<b>bracelet</b>
questions about the Clock Tower	<ul style="list-style-type: none"> <li>* When was it built?</li> <li>* Who owns it?</li> <li>* Is it painted in its original color?</li> <li>* Can I rent it for parties?</li> </ul>

updated 2012-11-11 06:30 utc goh@kawai.com http://



## when you're the visitor

- | ask for info and fill in the blanks
- | give info
- | create your answers

<b>visitor</b>	partner ID <b>99121235</b>
they like your ...	<b>pendant</b>
answers to your questions about the Clock Tower	<ul style="list-style-type: none"> <li>* It was built in ...</li> <li>* It's owned by ...</li> <li>* The original color was ...</li> <li>* I don't know. Let's ask.</li> </ul>

updated 2012-11-11 06:30 utc goh@kawai.com http://



## class schedule

- | 2012-11-21 *yuka's hawaii talk*
- | 2012-11-28 *big assignment due*
- | 2012-12-05 *explain your spot*
- | 2012-12-12 *christmas party*
- | 2012-12-19, 2012-12-26, 2013-01-02  
*no class*
- | 2013-01-09 *class resumes*

updated 2012-11-11 06:30 utc goh@kawai.com <http://goh.kawai.com/>



## what we will do (1)

- | between today and 2012-11-28
  - | you will *write an explanation* of a spot on campus
  - | you will submit your explanation on glexa
- | *submit a few days before class*, so that Goh can comment on your explanation
- | *read Goh's comments* before class

updated 2012-11-11 06:30 utc goh@kawai.com <http://goh.kawai.com/>



## what we will do (2)

- | on 2012-11-28 in class
  - | some of you will *stand in front of class* and explain a spot on campus to everybody
  - | the rest of you will talk to conversation partners
- | on 2012-12-05 in class
  - | you will *stand in front of class* and explain a spot on campus to everybody

updated 2012-11-11 06:30 utc goh@kawai.com <http://goh.kawai.com/>



## how to do your assignment (1)

- | learn about your spot
  - | visit your spot
  - | take pictures
  - | read ぐるぶらマップ, campus guide map, *litterae populi* magazine, web sites

updated 2012-11-11 06:30 utc goh@kawai.com <http://goh.kawai.com/>



## how to do your assignment (2)

- | write an explanation
- | write questions on topics not covered by your explanation
- | write answers to your own questions
- | you may write in Japanese if you don't know the English words

updated 2012-11-11 06:30 utc goh@kawai.com <http://goh.kawai.com/>



## how to do your assignment (3)

- | minimum effort = minimum points
- | extra effort = extra points
- | *earn more points*
  - | explain *more* than ぐるぶらマップ
  - | include your own *pictures*
  - | *interview* workers or customers
  - | read extra documents

updated 2012-11-11 06:30 utc goh@kawai.com <http://goh.kawai.com/>



## where to find info

- | ぐるぶらマップ
- | campus guide map
- | hokudai website
- | hokudai *litterae populi* magazine
  - | download pages from glexa
- | search engines

updated 2012-11-11 06:30 utc goh@kawai.com <http://goh.kawai.com/>



## example of explanation

- | see an example of
  - | a written explanation
  - | a spoken explanation

updated 2012-11-11 06:30 utc goh@kawai.com <http://goh.kawai.com/>

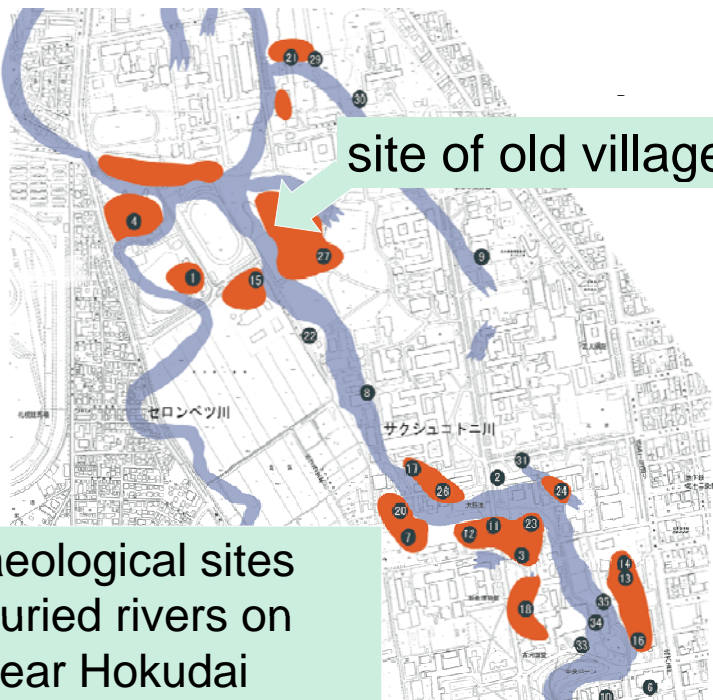




## written explanation

- | This is the site of an old village. It is located south of Kita 18-jou Street, between the hockey field and the baseball diamond.
- | The old village is one of the many Satsumon culture (擦文文化) sites on campus.
- | The Satsumon culture occurred in Hokkaido between the 7th and 13th centuries. People in the Satsumon culture lived in pit houses (竪穴住居) and used pottery for cooking.
- | Later, the Ainu culture became the major culture. The Ainu lived in posthole houses (掘立柱建物) and used iron for cooking.
- | The old village was studied by Hokudai from the Meiji period.
- | The old village is open all the time. Admission is free.

updated 2012-11-11 06:30 utc goh@kawai.com http://goh.kawai.com/



Archaeological sites  
and buried rivers on  
and near Hokudai



## info panel



**遺跡保存庭園**

北大構内にはサクシュコトニ川を中心として、その両岸に古代の竪穴住居跡が多数残っている。明治年間の絵地図にも、無数の竪穴住居跡を示す地面のくぼみが描かれている。しかし、現在はその殆どが完全に埋まり、地表からは見えなくなっている。この自然林の中には、竪穴住居のくぼみがまだ三十箇所ほど残っており、住居の状況をしのぶ事ができる。

この地点の遺跡は、昭和二十七年に一部が調査され、古代の村落である事がつきとめられた。また、昭和五十五年から継続実施されている埋蔵文化財調査で、これらの村落跡は奈良時代末から平安時代にかけてのものである事が判明した。北海道大学では、この貴重な遺跡を保存するために整備し、一般に公開する事になった。





## ask questions

- | asking questions is polite
- | prepare for questions
  - | what will people ask?
  - | what are the answers?

updated 2012-11-11 06:30 utc goh@kawai.com <http://goh.kawai.com/>



## examples of questions

- | how large are pit houses?
- | how many people lived in each house?
- | was it cold in winter?
- | how large were villages?
- | what did people eat?

updated 2012-11-11 06:30 utc goh@kawai.com <http://goh.kawai.com/>



## examples of answers

- | How large are pit houses?
  - | The houses in this village are about 3 to 4 meters in diameter.
- | How many people lived in each house?
  - | Nobody knows for sure. Probably at most 6 people.
- | Was it cold in winter?
  - | A thick roof and a stove kept the house warm.
- | How large were villages?
  - | This village had 30 houses.
- | What did people eat?
  - | They caught salmon in the Sakushukotoni river.

updated 2012-11-11 06:30 utc goh@kawai.com <http://goh.kawai.com/>



## today's conversations

June So Mark, where are you from?

Mark Oh, let me **tell you about myself**. I was born in California, and I spent most of my life there, except ...

I hope I didn't bore you.

June Oh no, not at all! That was fascinating. I was born in Chiang Mai but grew up in Bangkok ...

updated 2012-11-11 06:30 utc goh@kawai.com http://goh.kawai.com/



## today's conversations

June Mark, what spot did you choose for your big assignment?

Mark Well, I picked the site of the old village.

June How will you learn about it?

Mark I'll visit it, read some brochures and websites, and maybe interview a professor.

June Will you take pictures?

Mark I'll try. Hopefully the weather will be nice.

updated 2012-11-11 06:30 utc goh@kawai.com http://goh.kawai.com/



## you MUST talk to a TA

- | your TA will confirm that
  - | you understand the assignment
  - | you know what you will do when
  - | you have a plan to learn about your spot
  - | you know that extra work earns extra points
- | you may talk in Japanese if you wish
- | **TAs – carefully instruct each student**

updated 2012-11-11 06:30 utc goh@kawai.com http://goh.kawai.com/



## what's your spot?

- | ask for info and fill in the blanks
- | give info
- | create your answers

class-mate	partner ID 99121236
your spot	bio-toilet
their spot	old village
how they will learn about their spot	* visit it * take pictures * search on the internet * ask the hokudai museum curator * ask a professor at the archaeology center * ask a librarian

updated 2012-11-11 06:30 utc goh@kawai.com http://goh.kawai.com/



## glexa demonstration

- | week7
- | review phrases
- | learn phrases for
  - | asking directions
  - | giving directions

updated 2012-11-11 06:30 utc goh@kawai.com <http://goh.kawai.com/>



## one-stop website

- | <http://goh.kawai.com/>
- | link to glexa
- | course material (these slides)
- | contact form

updated 2012-11-11 06:30 utc goh@kawai.com <http://goh.kawai.com/>



## ending slideshow

- | if there's time

updated 2012-11-11 06:30 utc goh@kawai.com <http://goh.kawai.com/>



<http://goh.kawai.com/>